

# Next Level Mining

Full Turnkey Solutions and  
Workforce Accommodation Services



# Leading In A New Era

Our workforce accommodation services and full turnkey solutions are raising the standards for the well-being and safety of remote workers. From design and construction to food and facilities service delivery, our experienced teams and network of reliable partners are dedicated to powering your mining operation's performance and productivity.

## 500+

energy & mining clients receiving  
the best service in the world



**100 remote camps** serviced  
in 6 different countries



**35+ energy & mining sites**  
across 7 Canadian provinces



**Market share leader** for camp  
management in Canada



**30+** Indigenous Partners



**1,000,000 meals** served daily  
in mining sites globally



**29,000** employees excelling in  
on-going service and support globally

# Your Remote Camp Partner

Raising quality of life standards doesn't mean more expensive. It's just a better way to do business.

Sodexo is leveling up service standards in camp management. We believe that good is no longer good enough. That's why we tailor our services to meet the needs of today's mining partner - whether its managing a mining camp in the Yukon or aluminum refining in Quebec.



## Risk Mitigation

Fostering a culture of safety starts with the everyday - from the way your employees feel about their rooms to the coffee they drink.



## Closing the Talent Gap

The lack of skilled workers can put critical operations in jeopardy. Our services give you a competitive edge to attract and retain the best employees and close the talent gap.



## Partnerships for Prosperity

Sodexo's connection to prosperity in building relationships with Indigenous peoples is based on its 4R philosophy: Respect, Recognition, Revenue Sharing and Representation.



## Turnkey Support

Experienced managers bring your camp to life -- from design and construction to full service operations.



## Getting ready for 2030

The landscape of the industry is changing. Future proof your operations with the support of academic insights, new technology and sharing expertise across industries.



# Proactive Problem Solving

The mining industry is on a growth trajectory. Critical minerals and metals will power the technology of tomorrow. As demand evolves, mining companies are facing an increasingly complex operational landscape. The margin for error is non-existent.

Proactive problem solving is a core value of Sodexo Energy & Resources. We know you have no time to lose that's why we empower our managers to take action when they see risk. They solve problems before they start and stay by your side in all situations.

**24**  
hour  
response

**Mines don't close. Neither do We.**  
Even the most minor details can make a huge impact. Our teams have a 24-hour commitment to acknowledge, resolve, and address the root cause of every issue.

## Case Study

Rainy River Mine is located 65 km NW of Fort Frances, Ontario, Canada. The mine produces 325,000 ounces of gold and 480,000 ounces of silver per year.

New Gold has been a loyal Sodexo partner since 2015. In 2020, the client expanded the scope of work to better serve their 375 workers during the pandemic. Sodexo served 3 meals a day, added a retail store, housekeeping services and reception to ensure that all workers were taken care of in their home away from home.



*The teamwork that was displayed during our first positive COVID-19 case at camp was impressive. I'm proud to be part of the Sodexo/New Gold family.*

Supply Chain Manager, New Gold

# Your Day-to Day Partner in the Toughest Environments

Mining sites come as remote as you can get. No matter where you are, we are there.

Sodexo has over 30 years of experience operating remote sites all over the world. In Canada, we lead the market in camp management services. Our clients trust us because they know we will deliver - from getting supplies in by helicopter before a freeze to feeding workers cleaning up after a mudslide in BC. We are there delivering on-going service and support as your day-to-day partner in the toughest environments.

## Leveraging Expertise from Other Industries in Canada

Sodexo Canada operates over 575 sites and employs over 10,000 people in the mining, energy, healthcare, education, corporate, and entertainment sectors. With over 200 clients and 1 million customers served daily, Sodexo Canada's diverse portfolio, knowledge and expertise empowers our ability to innovate and drive up service standards.



# Full Turnkey Solutions

It all starts with the everyday. How operations run, camp facilities work and the small comforts of a warm meal and a cozy bed. Sodexo provides a full suite of facility services to turn your camp into a home for your workers. From front-desk check in, maintenance, housekeeping, snow removal and transportation – **whatever you need, whenever and wherever you need it.**

We are ready before day one. Working alongside of your design team, we can help you build efficiencies into your workforce accommodations. We know what works well and what doesn't.

### Provision of Workforce Accommodation

- Modular Solution Consulting
- Design-Build Solutions
- Permits & Land
- Site Design, Layout & Engineering
- Custom In-House Manufacturing,
- Retrofitting, and Renovation Solutions
- Project Management
- Fleet Rentals & Sales
- Logistics & Transportation
- Site Preparation
- Full-Service Installs & Dismantles
- Equipment & Site Inspections
- Utilities Management & Power Generation



### One Partner for All Your Needs

-  Modular Solutions
-  Logistics & Transport
-  Design & Build
-  Full Service Installs & Dismantles
-  Permits & Land
-  Project Management

# 80,000

Canada's mining industry will have nearly 80,000 jobs to fill by 2030. Create an environment where people want to work and they will return over and over.

Mining Industry Human Resources Council

# Workforce Accommodation Services

Getting your mining crew ready in a moments notice can only be managed by a skilled provider. Sodexo can help you source and manage modular accommodations for your mining workers.



## Fast, Fresh and Full of Flavor

61% of employees are interested in food that saves them time and effort. Offering a variety of choices from upscale micro markets, trendy food trucks, coffee shops and vending in addition to traditional cafeterias supports a diverse workforce and their productivity goals.



## Food for Fuel

Mining workers can burn up to 700 calories an hour. When menu planning, we make sure that the food we serve gives them the fuel they need to keep them healthy and safe.



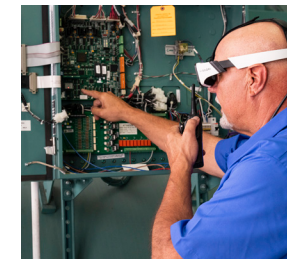
## Digital Natives

Today's workers want connectivity - a touch of a button, an app and access to the world outside of work. Sodexo supports communication through our MyWay app – making it easy to give feedback, scan and pay or just browse the day's activities. Combined with our internal digital systems, you get real-time feedback on your people and operations through one easy-to-use dashboard.



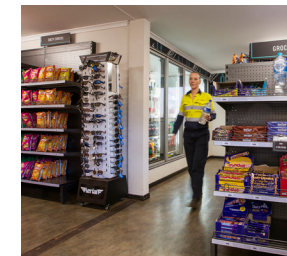
## End-to-End Experience

- Accommodation Management
- Onsite Catering
- Check In & Concierge
- Self-Check Out
- Meetings & Events
- Travel Logistics
- Employee Transportation
- Cleaning & Janitorial
- Laundry & Linen
- Special Events & Theme Nights



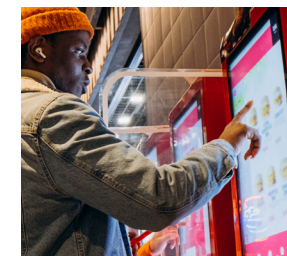
## Field Support & Maintenance

- Pest Control
- Technical Maintenance
- Mechanical, Electrical & Plumbing
- General Repairs & Handyman
- Grounds & Landscaping
- Snow Removal
- Waste Management
- Uniforms & Workwear
- Security
- Roof Asset Management
- Vendor & Supply Management
- Environmental Management



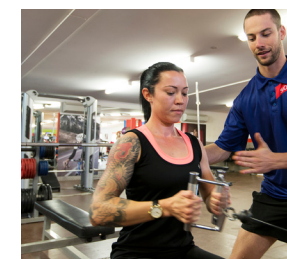
## Multi-Choice Retail

- Retail Store
- Breakroom Coffee & Pantry
- Full-Service Coffee Shop
- Click & Collect Ordering



## Camp Services Technology

- Employee Experience App
- Digital Kiosks & Interfaces
- Robotic Cleaning Equipment
- AR Smart Glasses for Maintenance
- Wearable Safety Technology
- Smart Lockers
- Water Treatment & Storage

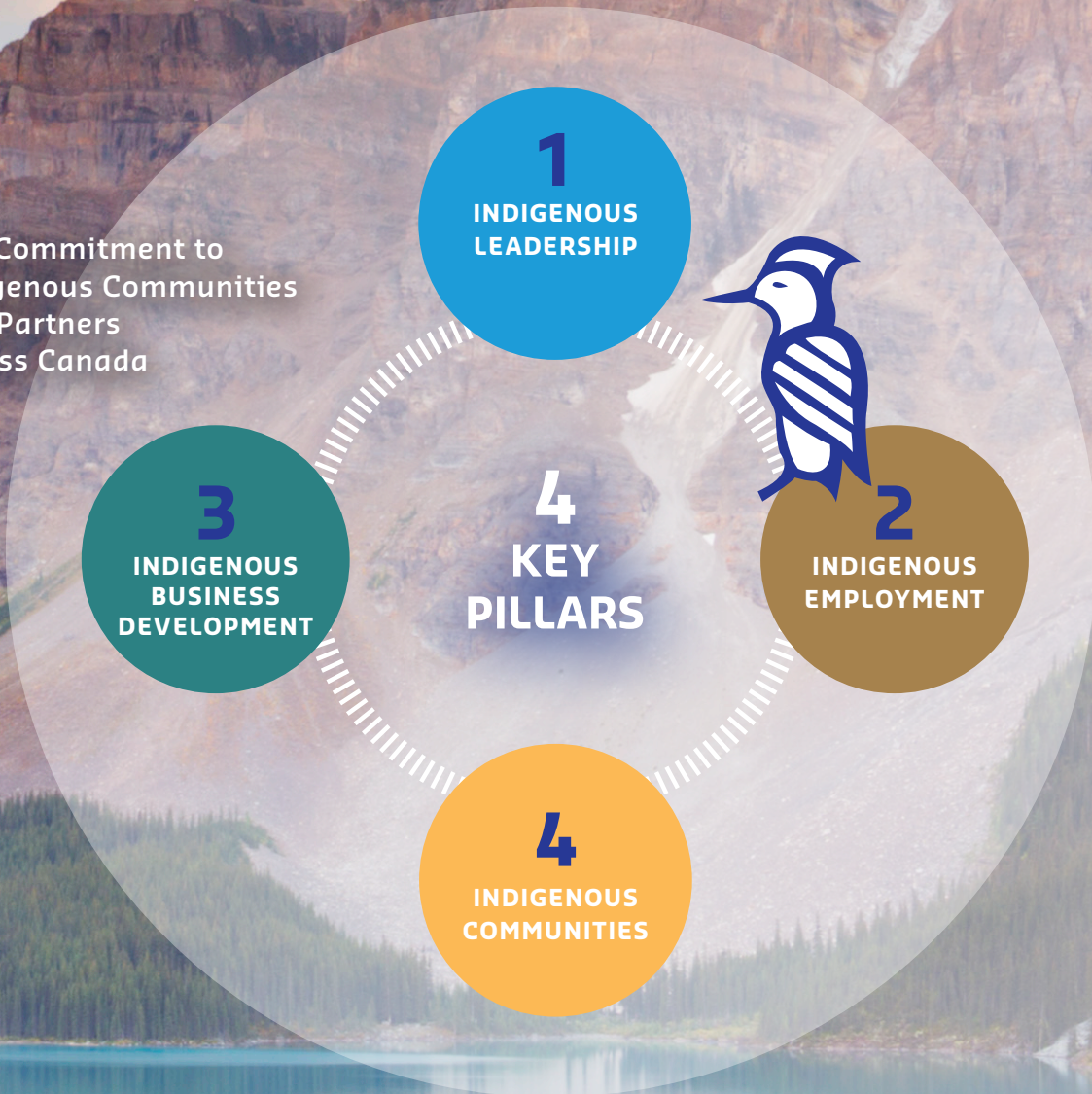


## Health & Wellness

- Fitness Center Management
- Wellness & Recreation Programs
- Employee Engagement

# The Culture of Community

Our Commitment to Indigenous Communities and Partners Across Canada



Sodexo Canada is committed to a culture of diversity, equity, and inclusion. This includes building respectful relationships between Indigenous and non-Indigenous peoples.

We believe that Indigenous prosperity is good for all. That's why we are committed to recruiting Indigenous leadership, creating meaningful employment, investing in local communities and supporting a diverse network of Indigenous suppliers.

For more than two decades, Sodexo Canada has been promoting, reinforcing and nurturing business relationships with Indigenous communities and nations. These long-term partnerships have been recognized and celebrated every year by the Canadian Council of Aboriginal Business (CCAB). We're proud to say that in 2019, we once again received the gold-level PAR certification, the highest level of recognition issued by the CCAB. Companies working towards this certification will testify that achieving it is no easy feat. It is a clear demonstration of our organization's involvement in Indigenous communities and nations, driven by strong leadership with defined commitments and goals.

**Progressive Aboriginal RELATIONS** **GOLD LEVEL**

Canadian Council for Aboriginal Business 

**2 Decades of PAR Gold Level**



"Sodexo is a good example of meaningful benefits to the community. With the source revenues that are generated because of the joint venture, Fox Lake has managed to build two administration offices, and [indirectly] managed to startup businesses."  
—**Robert Wavey**,  
Special advisor to the Fox Lake Cree Nation's Chief and Council



"Our contracts provide benefits to the Haisla members in the form of employment and training"  
—**Keith Nyce**,  
President of Lee-Bo Enterprises Inc



"DPI is committed to developing ties with partners who share the same values of openness and respect. This is what we found with the Sodexo team"  
— **Linda Langlais**,  
Executive director of DPI and member of the Pekuakamiulnuatsh First Nation



"We are looking forward to helping the economy, the region and our community"  
—**Paulusie Saviadjuk**,  
President and owner of Nuvu Enterprises



# A Better Tomorrow

We believe that together we can build a better tomorrow. Sodexo holds a spot on the World's Most Admired Companies list, Dow Jones Sustainability Index, S&P Global Sustainability Yearbook, Diversity Inc. Top 50 and Bloomberg Equality Index. In 2020, Sodexo joined RE100, committing to 100% Renewable Energy in its operations by 2025.

Progressive  
Aboriginal  
RELATIONS **GOLD  
LEVEL**

Canadian Council for  
Aboriginal Business 

**2 Decades of PAR Gold Level**

Sodexo Canada  
5420 N. Service Road  
Burlington, ON L7L 6C7  
[ca.sodexo.com](http://ca.sodexo.com)

