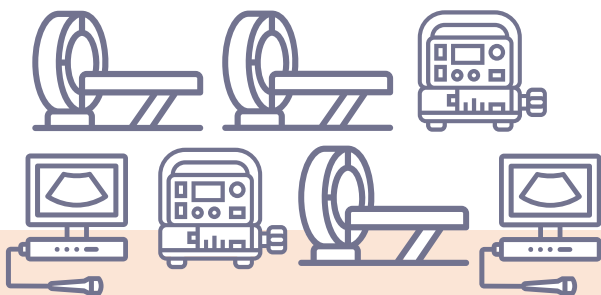


# Traditional Capital Replacement vs. Sodexo HTM's Approach

## Traditional Approach

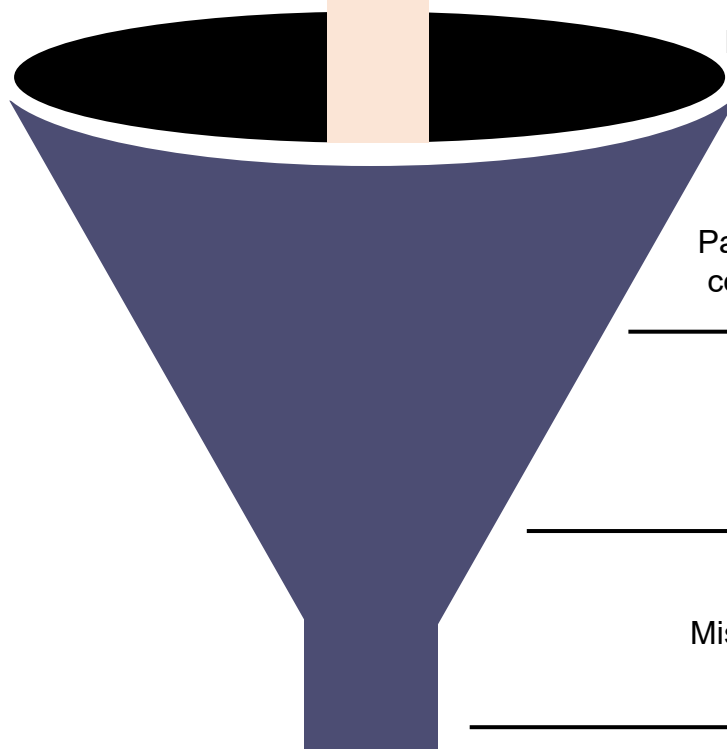
Replacement focused on age and OEM-designated end of life



VS

## Sodexo's Approach

Prioritizes replacement based on multivariate factors



### Safety

Recalls, patient incidents and cybersecurity

### Supportability

Parts and service availability, costs and EOL/EOSL dates

### Condition

Relative age, physical condition and reliability

### Clinical Impact

Mission essential equipment and patient impact

Sodexo delivers a bias-free, data-driven evaluation to prioritize when to purchase

